



Older Persons in Lao PDR

Promoting Decent
Work for Older Person
in ASEAN+3

27-28 June 2019



VILAYPHONE XAYSONGKHAM

Department of Policy for Devotee, Disability and the Elderly
Ministry of Labor and Social Welfare

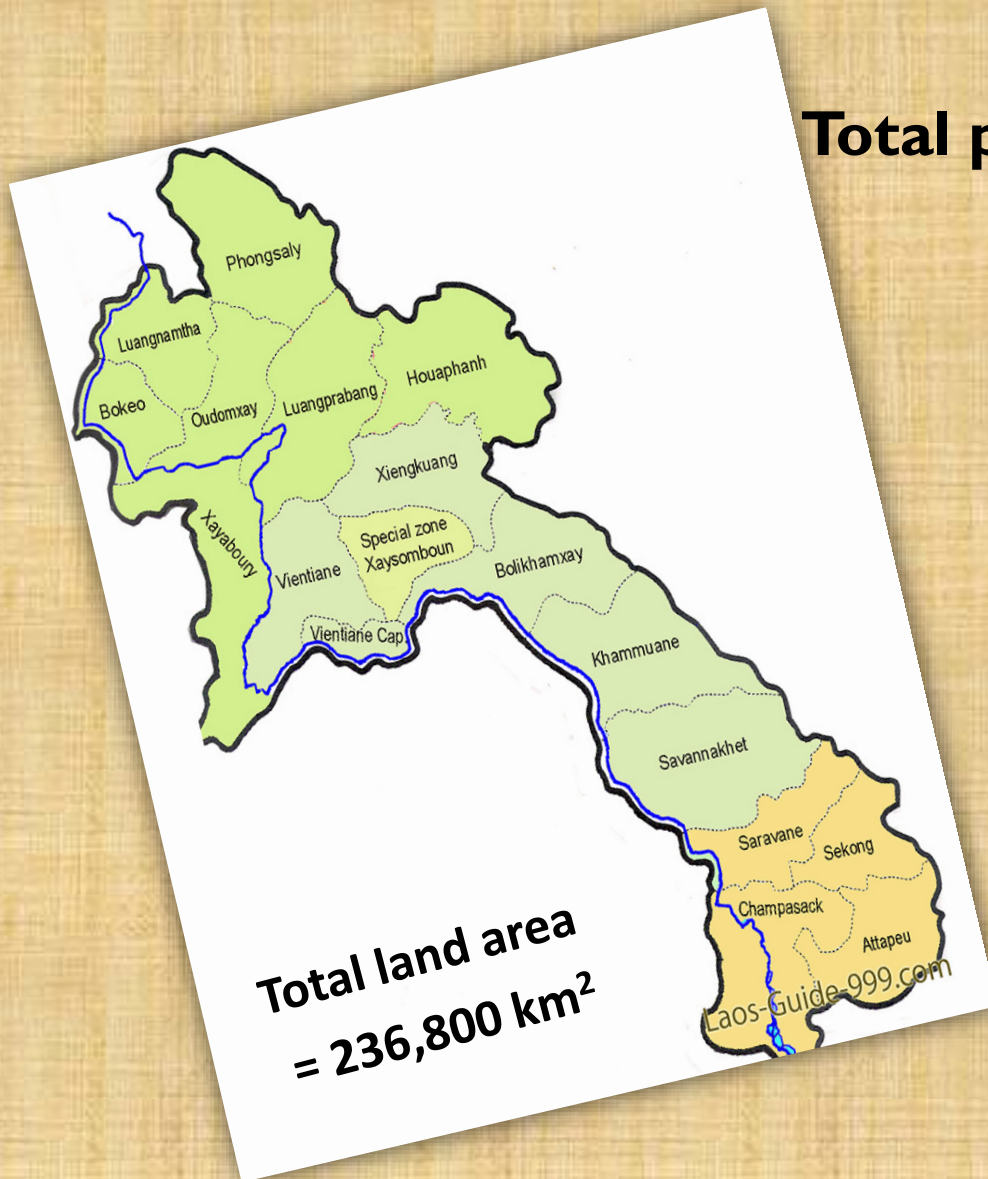
Lao PDR (I/I)



- A landlocked country
- Surrounded by China, Myanmar, Thailand, Vietnam and Cambodia.
- Total land area 236,800 square kilometers.
- 6,000 sq kilometres is water,
- 230,800 sq kilometres is land
- About 70% of the land is mountainous

- 50 Ethnic Group
- 64.7% belief in Buddhist
- 1.7% belief in Christian
- 31.4% no religion
- 2.1% others

Lao PDR (1/2)



Total population = 6,492,228 (2015)

- **Urban = 2,137,831 (32.9%)**
- **Rural = 4,354,397 (67.1%)**
- **Female = 3,237,458 (49.8%)**
- **Male = 3,254,770 (50.2%)**

Demography of Ageing of Lao PDR

	1995	2005	2015
Population Density (persons per sq.km)	19	24	27

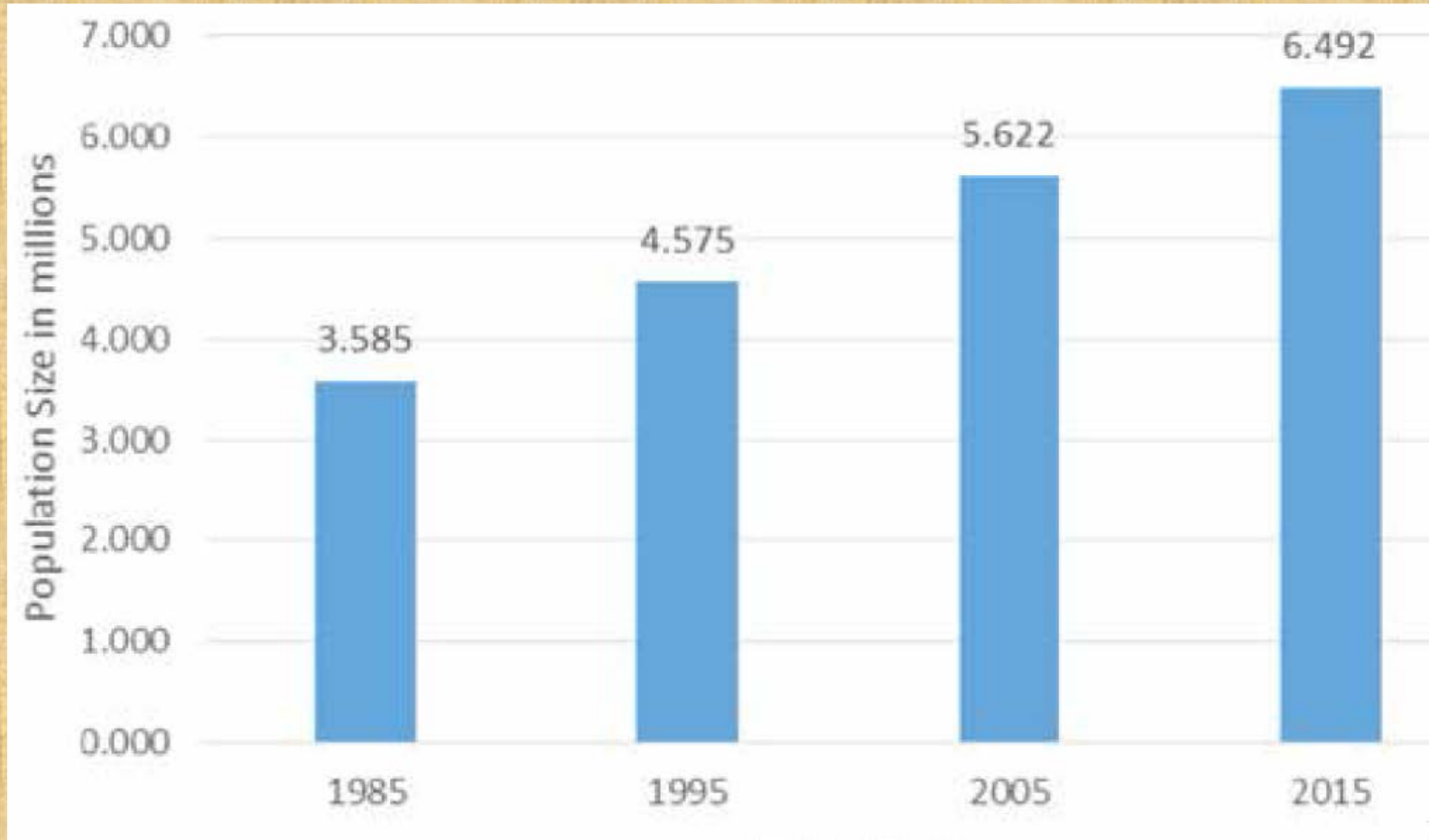
Fertility	1995	2005	2015
Crude Birth Rate, per 1,000 persons	41.3	34.7	28

Mortality, (per 1,000)	1995	2005	2015
Crude Death Rate	15.1	9.8	8.2

Life Expectancy, (years)	1995	2005	2015
Female	52	63	65
Male	20	59	62

Demographic Transition of Lao PDR(1/1)

Population Growth, 1985-2015



Source: Lao statistics Bureau

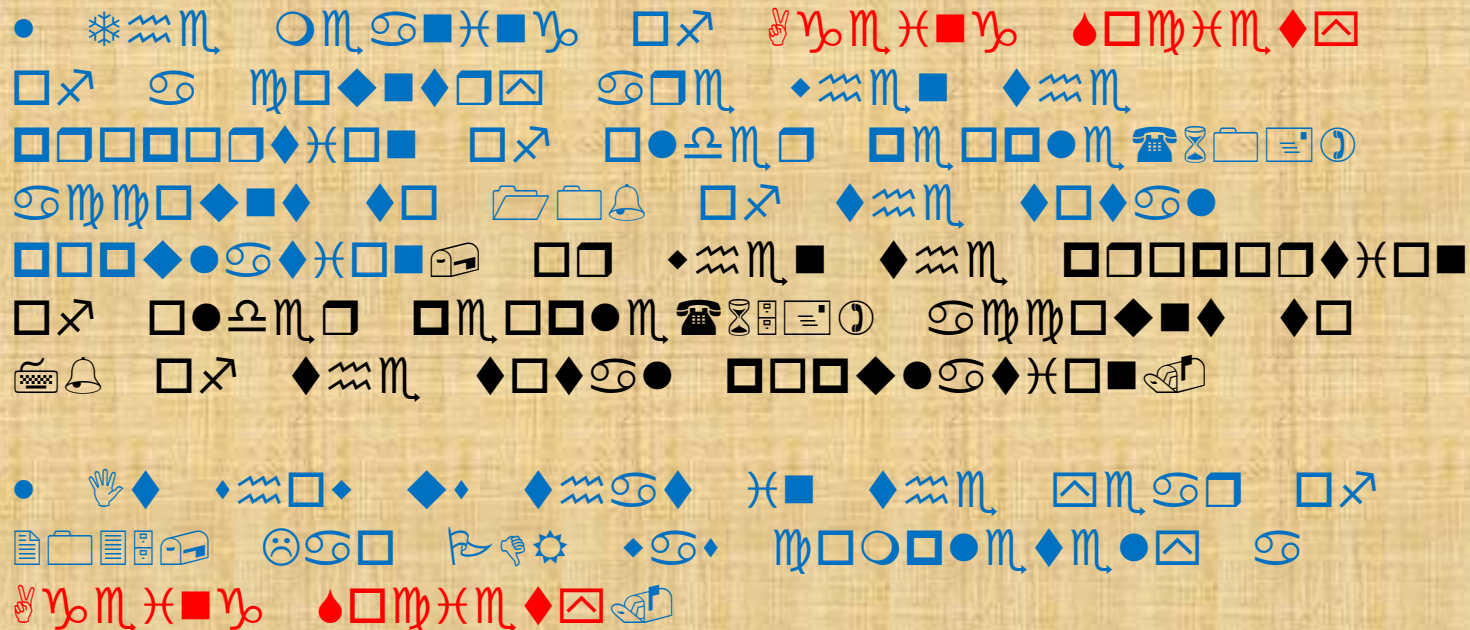
Demographic Transition of Lao PDR(1/2)

Age Group	2015	2025	2035	2045
0-9	1,361,192	1,488,922	1,375,612	1,318,205
10-19	1,417,616	1,515,373	1,476,004	1,367,284
20-29	1,270,025	1,382,065	1,502,652	1,466,938
30-39	916,317	1,226,898	1,362,985	1,487,544
40-49	639,777	904,084	1,196,054	1,336,490
50-59	465,025	612,732	853,705	1,141,481
60-69	246,080	388,398	531,695	758,122
70-79	118,505	170,805	274,640	392,871
80+	57,691	55,972	81,791	139,874
Total	6,492,228	7,745,249	8,655,137	9,408,809

Source: Lao statistics Bureau

Demographic Transition of Lao PDR(1/3)

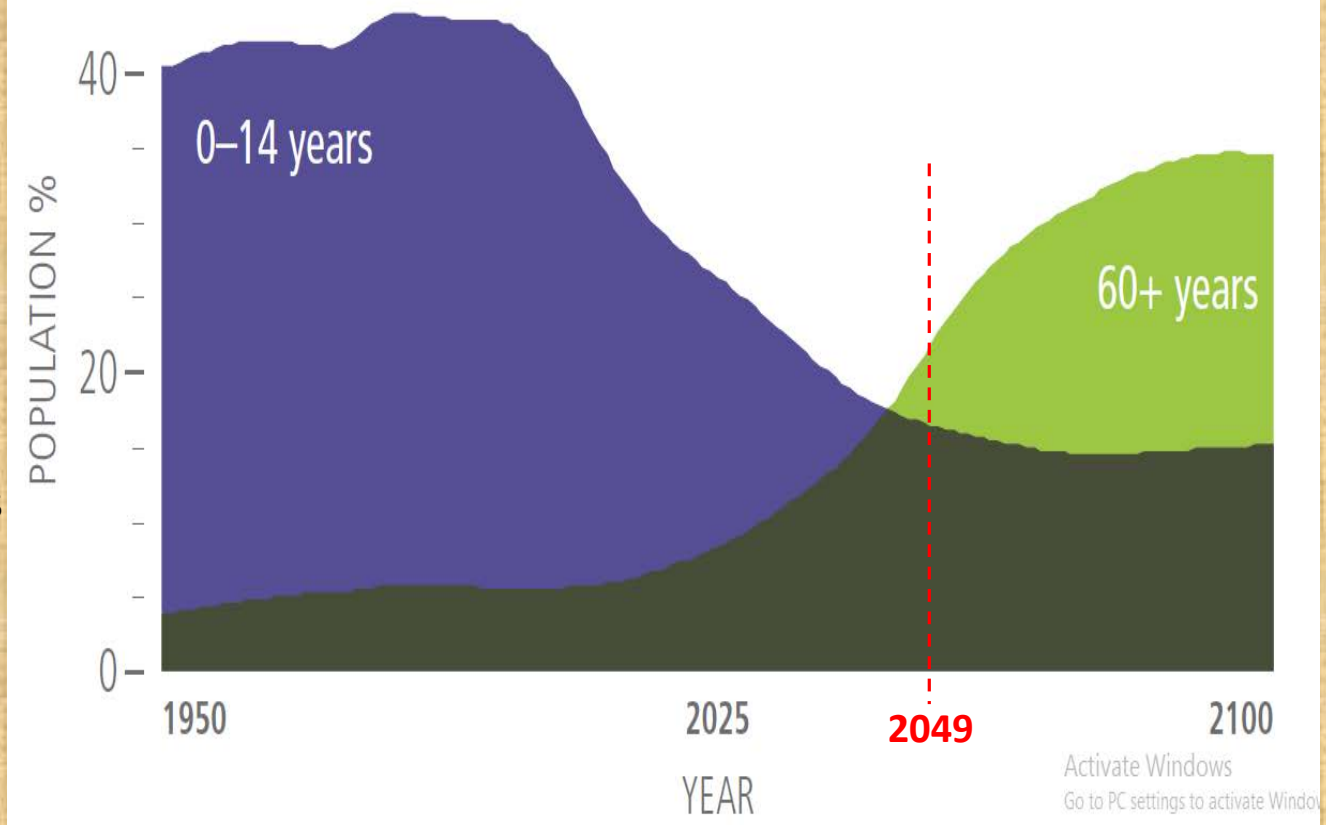
	2015	2025	2035	2045
Total Population	6,492,228	7,745,249	8,655,137	9,408,809
Population of 60+	422,276	615,175	888,126	1,290,867
Percentage of 60+	6.5%	7.9%	10.2%	13.7%



Source: Lao statistics Bureau

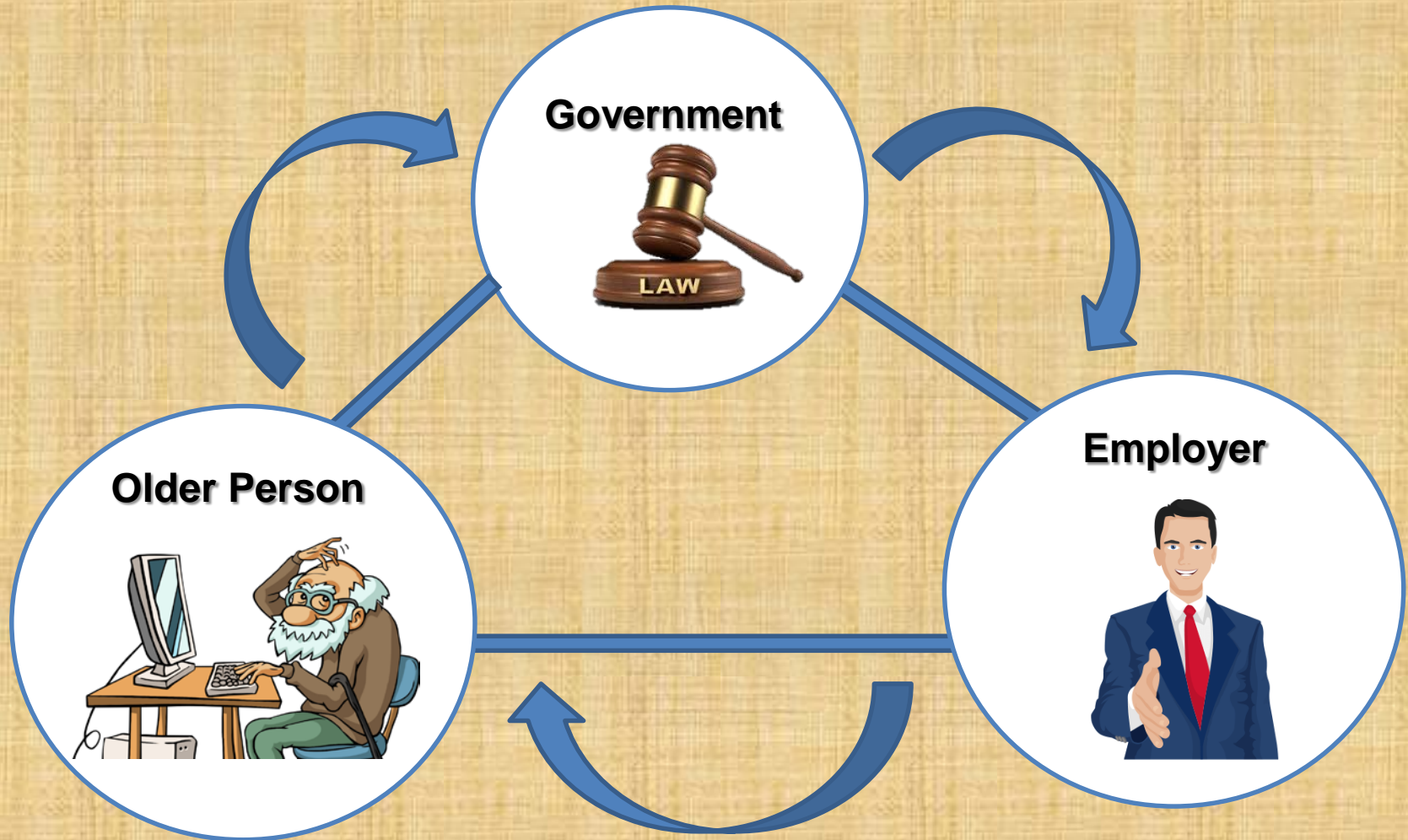
Demographic Transition of Lao PDR(1/4)

Population trends in younger and older age groups, 1950–2100



The Proportion of the population aged 60 years and above is projected to exceed that of the younger Population aged 0-14 years in 2049

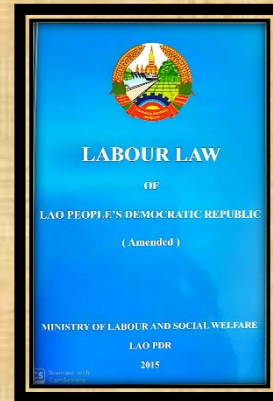
Role of Key Actors in Promoting Decent Work for OPs



Relevant Legislations for Older Persons



**Law on Social Security
(Just Some Article of this
Law which is cover OPs)**



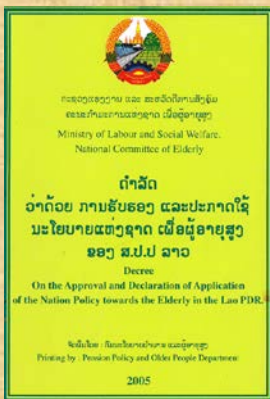
**Labour Law
(Adopted by President the
National Assembly)**



**National Committee for
Disabled People and the
Elderly (NCDE)
(Prime Minister's Degree)**

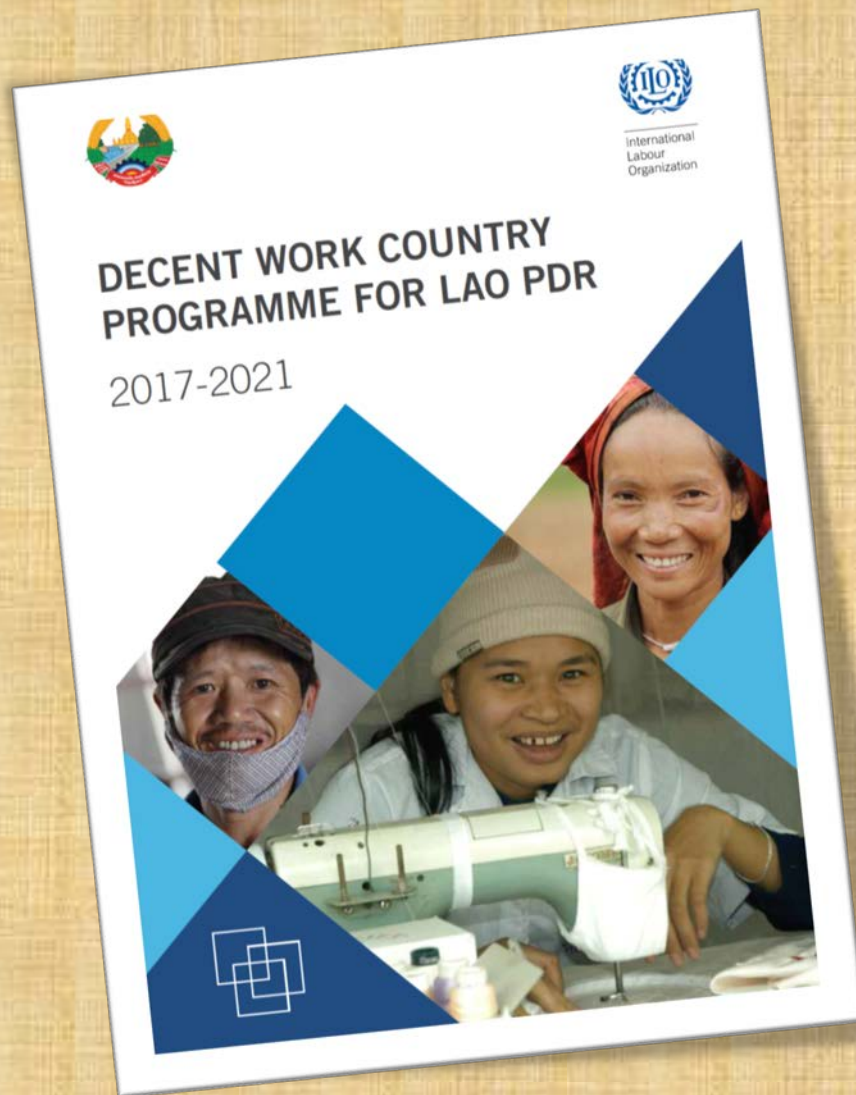


**Decree on Occupational
Safety and Health
(Prime Minister's Degree)**



**The National Policy
towards the Elderly in the
Lao PDR
(Prime Minister's Degree)**

Workforce profile shows majority are unpaid family or own account workers



Of the total population aged 10 years and older, the 2015 census showed that 68 per cent were “usually employed” and 29 per cent were outside the labour force.

Most employed people in Lao PDR were either unpaid family workers (43 per cent) or own-account workers (38 per cent). Paid employees constituted 19 per cent of the country’s workforce in 2015, of which more than half worked as government employees or in state cooperatives. Less than one per cent of the total workforce were employers.

Conclusion

Challenges

- Lack of legislation directly to Older persons
- Lack of data on OPs a huge problem.
- Lack of OPs specific support, Such as LTC, the assistance system for OPs, particularly the one who are poor and unable to caring himself.
- The **budget cake** which would be allocate for OPs are still challenges



Plans for the future

- Making a legislation directly to Older persons
- Thinking of renew the national policy, drafting a strategy and action plan for OPs
- Promote cooperation of CSOs and international organization
- Capacity building government officials,
- Strengthen interline agencies





Thank You